

# BRUIN HILLS

Welcome to Bruin Hills! Bruin Hills became part of the Belmont community in the 1990's when the University purchased the property and renovated it for student use. Any student with at least 30 credit hours or 2 completed semesters of college are eligible to live in Bruin Hills. There are a total of 88 2 bedroom, 1 bathroom units. It is also a gated community with access through driving and pedestrian gates. Below you will find a list of the amenities in each apartment:



## Kitchen

- 10'x8'
- Full size refrigerator
- Double sinks
- Four burner gas stove/oven
- 3'x3' kitchen table with 2 chairs
- 1 window with blinds and screen

## Bedroom

- 10.5'x10.5'
- Twin bed with extra long mattress
- Four drawer dresser
- Closet
- 2 windows, 3' x 4' in size with blinds and screens
- Internet, cable, phone hook-up

## Living Room

- 16.5'x10.5'
- Couch
- 2 end tables
- 1 window, 4'4" x 4'1" in size with blinds and screen
- Cable hook-up

Laundry services are available in the Bruin Hills Clubhouse and there are eight washers and eight dryers. Telephones are not provided in the apartment but are highly recommended because that is the best way for professors/administrators to contact a resident. All utilities, cable service, internet service, local phone, and voicemail are included in the cost for Bruin Hills. However, each student is responsible for paying his/her personal long distance phone service. Students who live in Bruin Hills are not required to purchase a meal plan, but have the option to do so.

## Staff

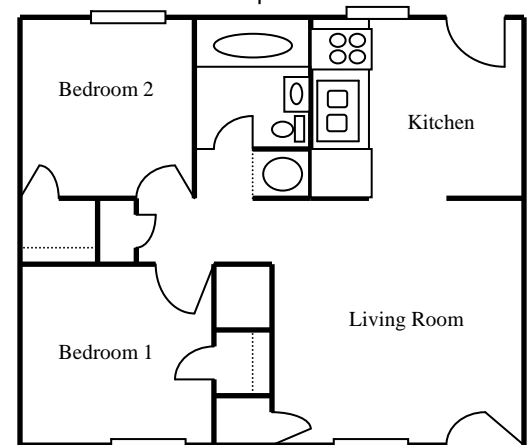
Bruin Hills residents are supported by 5 residents who live in apartments throughout the complex. Each RA has gone through extensive training in order to be a resource to our residents. RA's create social and educational opportunities right here in the complex through programming and community building efforts.

The RA's are supervised by one full-time, live-in professional staff member, known as the Residence Director. The RD is trained in crisis management, acts as a resource to the residents of the complex, and oversees the administrative aspects of the complex such as maintenance and discipline. The RD maintains regular hours in their office in the Clubhouse. The RD also lives in an apartment within the complex.

The front desk in the clubhouse is open from 10am – 10pm each day to assist with any resident needs. The clubhouse is also available to reserve for band rehearsals or other functions at the discretion of the RD.

## Mail

Mail is delivered to Bruin Hills and put up each day by the Residence Life Staff. The mailing address is:  
[Building Number] - [Apartment Number] Bernard Circle  
Nashville, TN 37212



Bruin Hills Layout (Not drawn to scale)



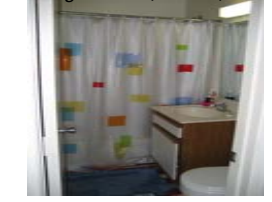
Living Room (View 1)



Living Room (View 2)



Kitchen



Bathroom



Bedroom (View 1)



Bedroom (View 2)

Upper-class Students Only